

**INF.11 Sampling Programme SOIVRE 2005-2006****Contribution from Spain****VARIETIES WITH FIRMNESS  $\geq$  6,5 kg/0,5 cm<sup>2</sup>**

Variety	Fruit and flesh colour	No. of samples $\geq$ 6,5 kg/ 0,5 cm <sup>2</sup>	No. of samples < 6,5 kg/ 0,5 cm <sup>2</sup>
ARTIC SNOW	Yellow flesh Nectarine	1	0
AUGUST RED	Yellow flesh Nectarine	6	5
BIG TOP	White flesh Nectarine	5	47
CALDESI	White flesh Nectarine	3	3
COMODIN	Yellow flesh Peach	3	4
CREX	Yellow flesh Nectarine	1	0
ELEGANT LADY	Yellow flesh Peach	9	25
EMERAUDE	White flesh Nectarine	2	3
FLAMESKY	Yellow flesh Nectarine	2	1
FLORIDA	Yellow flesh Peach	1	4
J-1	White flesh Nectarine	1	0
LIZA RED	Yellow flesh Nectarine	1	13
MARIA BLANCA	White flesh Peach	1	0
MERRIL O'HENRY	Yellow flesh Peach	13	18
N B 3	White flesh Nectarine	1	0
NECTAROSS	Yellow flesh Nectarine	1	3
RED DIAMOND	Yellow flesh Nectarine	5	13
RED JIM	Yellow flesh Nectarine	10	14
ROYAL GLORY	Yellow flesh Peach	3	6
RYANSUN	Yellow flesh Peach	2	0
SILVER QUEEN	White flesh Nectarine	1	1
SNOW QUEEN	White flesh Nectarine	2	4
SUMMER RICH	Yellow flesh Peach	3	14
SUPRA 1	White flesh Nectarine	1	10
TARDIBELLE	Yellow flesh Peach	1	9
TRAZEE ELEGIDO	Yellow flesh Nectarine	1	0
VENUS	Yellow flesh Nectarine	11	26
YELLOW FLESCH	Yellow flesh Peach	2	1

Firmness results and subjective testing

Variety	Fruit and flesh colour	No. of samples >= 6,5 kg/ 0,5 cm2	No. of samples < 6,5 kg/ 0,5 cm2
COMODIN	Yellow flesh Peach	3	4
ELEGANT LADY	Yellow flesh Peach	9	25
FLORIDA	Yellow flesh Peach	1	4
MERRIL O'HENRY	Yellow flesh Peach	13	18
ROYAL GLORY	Yellow flesh Peach	3	6
RYANSUN	Yellow flesh Peach	2	0
SUMMER RICH	Yellow flesh Peach	3	14
TARDIBELLE	Yellow flesh Peach	1	9
YELLOW FLESH	Yellow flesh Peach	2	1
MARIA BLANCA	White flesh Peach	1	0
ARTIC SNOW	Yellow flesh Nectarine	1	0
AUGUST RED	Yellow flesh Nectarine	6	5
CREX	Yellow flesh Nectarine	1	0
FLAMESKY	Yellow flesh Nectarine	2	1
LIZA RED	Yellow flesh Nectarine	1	13
NECTAROSS	Yellow flesh Nectarine	1	3
RED DIAMOND	Yellow flesh Nectarine	5	13
RED JIM	Yellow flesh Nectarine	10	14
TRAZEE ELEGIDO	Yellow flesh Nectarine	1	0
VENUS	Yellow flesh Nectarine	11	26
BIG TOP	White flesh Nectarine	5	47
CALDESI	White flesh Nectarine	3	3
EMERAUDE	White flesh Nectarine	2	3
J-1	White flesh Nectarine	1	0
N B 3	White flesh Nectarine	1	0
SILVER QUEEN	White flesh Nectarine	1	1
SNOW QUEEN	White flesh Nectarine	2	4
SUPRA 1	White flesh Nectarine	1	10

Firmness results and subjective testing

BRIX	No. of samples
4.9	1
6.1	1
6.4	1
6.8	1
7.1	1
7.2	1
7.3	1
7.4	1
7.8	2
7.9	2
8.0	9
8.2	4
8.4	4
8.5	9
8.6	9
8.7	7
8.8	9
8.9	8
9.0	22
9.1	9
9.2	11
9.3	11
9.4	13
9.5	18
9.6	17
9.7	10
9.8	20
9.9	14
10.0	43
10.1	14
10.2	15
10.3	13
10.4	15
10.5	22
10.6	14
10.7	14
10.8	8
10.9	18
11.0	35
11.1	11
11.2	23
11.3	14
11.4	11
11.5	22
11.6	11
11.7	14
11.8	16
11.9	11
12.0	28
12.1	11
12.2	11
12.3	13
12.4	8
12.5	19
12.6	11
12.7	16
12.8	10
12.9	10
13.0	19
13.1	10
13.2	7
13.3	5
13.4	9
13.5	11

FIRMNESS	No. of samples
0.50	2
0.60	1
0.73	1
0.90	3
1.00	2
1.10	1
1.20	2
1.30	2
1.33	1
1.40	2
1.49	1
1.50	3
1.60	1
1.67	1
1.80	1
2.08	1
2.10	4
2.20	4
2.30	3
2.40	3
2.41	1
2.43	1
2.50	1
2.60	2
2.66	1
2.70	8
2.80	7
2.83	1
2.90	3
2.93	1
2.95	1
2.98	1
2.99	1
3.00	6
3.01	1
3.02	1
3.08	1
3.10	4
3.17	1
3.20	7
3.22	1
3.23	1
3.27	1
3.28	2
3.30	9
3.32	1
3.33	1
3.35	1
3.40	6
3.50	10
3.55	1
3.58	1
3.60	8
3.64	1
3.65	2
3.67	1
3.70	3
3.71	1
3.80	11
3.80	1
3.82	2
3.84	1
3.85	1
3.86	2

	Firmness	Brix
Mean	4.85	11.4
STD error	1.39	2.0
Var	1.92	4.0
Min	0.50	4.9
Max	9.23	19.4

Firmness results >=6,5 kg/0,5 cm <sup>2</sup>	
Brix mean	12.8
Brix std. Error	2.16
Firmness	Brix
6.50	10.6
6.50	15.1
6.50	14.0
6.50	13.1
6.50	9.4
6.50	11.2
6.50	13.0
6.50	9.6
6.50	13.0
6.50	10.0
6.50	11.5
6.50	10.0
6.50	14.0
6.50	10.5
6.50	12.0
6.50	15.7
6.50	9.4
6.50	12.2
6.50	14.3
6.50	13.0
6.52	13.4
6.53	12.3
6.55	12.7
6.60	9.9
6.60	13.6
6.60	14.3
6.60	16.9
6.60	9.3
6.60	11.0
6.60	15.5
6.70	10.0
6.70	10.2
6.70	11.3
6.72	14.8
6.73	11.9
6.76	11.4
6.80	11.0
6.80	12.0
6.80	17.4
6.80	13.5
6.80	13.5
6.80	13.5
6.80	9.0
6.80	10.9
6.80	14.5
6.80	13.7
6.80	10.4
6.87	13.0

Firmness results and subjective testing

BRIX	No. of samples
13.6	9
13.7	8
13.8	6
13.9	8
14.0	11
14.1	3
14.2	2
14.3	4
14.4	4
14.5	6
14.6	5
14.7	2
14.8	4
14.9	4
15.0	7
15.1	1
15.2	2
15.3	2
15.4	2
15.5	3
15.6	3
15.7	2
15.8	1
15.9	2
16.0	3
16.2	2
16.4	3
16.5	1
16.9	1
17.0	2
17.4	2
17.7	1
17.9	1
18.2	1
18.4	1
18.8	1
19.4	1
<b>TOTAL</b>	<b>879</b>

FIRMNESS	No. of samples
3.88	1
3.90	13
3.92	1
3.95	1
3.96	1
3.99	1
4.00	18
4.04	1
4.10	9
4.12	2
4.18	1
4.19	1
4.20	20
4.21	1
4.23	1
4.24	1
4.25	2
4.26	1
4.29	1
4.30	20
4.31	1
4.32	1
4.33	1
4.34	1
4.38	2
4.40	29
4.44	2
4.45	1
4.46	1
4.47	1
4.49	2
4.50	30
4.51	1
4.54	1
4.55	1
4.60	9
4.62	1
4.66	1
4.67	1
4.68	1
4.70	16
4.76	1
4.78	1
4.80	15
4.85	1
4.89	1
4.90	19
4.91	1
4.92	1
4.97	1
4.98	1
4.99	1
5.00	22
5.01	1
5.03	1
5.05	1
5.08	1
5.10	12
5.10	1
5.12	2
5.14	2
5.16	1
5.18	1
5.20	20

6.90	12.7
6.90	18.4
6.90	10.3
6.90	9.9
6.92	14.4
6.95	12.5
7.00	10.0
7.00	11.0
7.00	11.5
7.00	14.2
7.00	13.0
7.00	13.0
7.00	14.9
7.00	12.9
7.00	14.0
7.00	13.2
7.00	11.5
7.00	12.0
7.07	13.1
7.10	15.2
7.10	12.8
7.10	13.2
7.10	13.0
7.10	15.6
7.17	8.0
7.19	14.4
7.20	13.7
7.20	14.0
7.22	13.5
7.26	13.7
7.30	13.2
7.30	16.4
7.30	17.4
7.30	16.2
7.37	14.3
7.40	13.9
7.50	12.5
7.50	12.0
7.50	10.0
7.59	15.6
7.60	11.7
7.68	13.7
7.70	15.2
8.00	17.7
8.17	13.4
8.23	9.5
8.50	15.0
9.23	13.9

Firmness results and subjective testing

BRIX	No. of samples
------	----------------

FIRMNESS	No. of samples
5.20	1
5.22	1
5.23	1
5.24	1
5.28	1
5.29	1
5.30	17
5.31	2
5.33	1
5.35	2
5.37	1
5.38	2
5.39	2
5.40	11
5.42	2
5.44	2
5.45	1
5.46	1
5.47	2
5.50	14
5.54	2
5.55	1
5.60	15
5.60	1
5.61	1
5.63	2
5.64	1
5.65	1
5.67	1
5.68	1
5.70	8
5.70	1
5.80	1
5.80	11
5.90	7
5.92	1
5.95	1
5.98	1
6.00	25
6.01	1
6.10	14
6.19	1
6.20	14
6.24	1
6.25	1
6.26	1
6.30	10
6.33	1
6.36	1
6.40	16
6.42	1
6.47	1
6.50	20
6.52	1
6.53	1
6.55	1
6.60	7
6.70	3
6.72	1
6.73	1
6.76	1
6.80	11
6.87	1
6.90	4

Firmness results and subjective testing

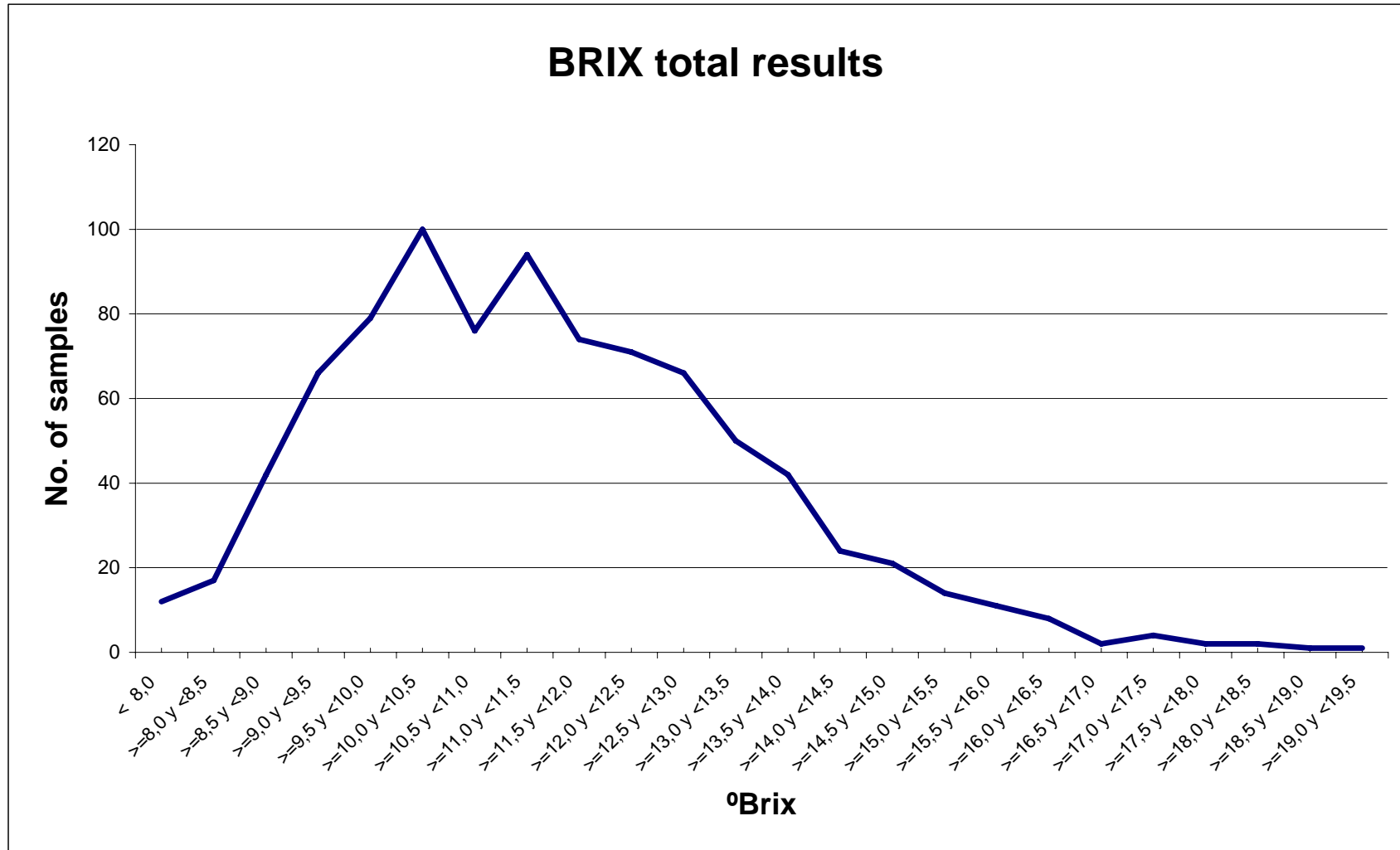
BRIX	No. of samples
------	----------------

FIRMNESS	No. of samples
6.92	1
6.95	1
7.00	12
7.07	1
7.10	5
7.17	1
7.19	1
7.20	2
7.22	1
7.26	1
7.30	4
7.37	1
7.40	1
7.50	3
7.59	1
7.60	1
7.68	1
7.70	1
8.00	1
8.17	1
8.23	1
8.50	1
9.23	1
<b>TOTAL</b>	<b>774</b>

Relationship between firmness > 6,5 and the subjective test.

Brix	Firmness	Taste	Appearance and colour
15.10	6.50	RIPE	RIPE
10.00	6.50		
14.00	6.50		
9.60	6.50	RIPE	UNRIPE
9.40	6.50	RIPE	UNRIPE
11.20	6.50	RIPE	RIPE
10.50	6.50		
12.00	6.50		
13.00	6.50		
13.00	6.50		
11.50	6.50		
12.20	6.50		
10.60	6.50	RIPE	RIPE
9.40	6.50	RIPE	RIPE
14.00	6.50	RIPE	RIPE
10.00	6.50	UNRIPE	UNRIPE
13.10	6.50	RIPE	RIPE
13.00	6.50	RIPE	RIPE
15.70	6.50	RIPE	RIPE
14.30	6.50	RIPE	RIPE
13.35	6.52		
12.30	6.53		
12.67	6.55	RIPE	RIPE
9.90	6.60	RIPE	RIPE
9.30	6.60	RIPE	RIPE
14.30	6.60	RIPE	RIPE
11.00	6.60	RIPE	RIPE
13.60	6.60	RIPE	RIPE
16.90	6.60	RIPE	RIPE
15.50	6.60	RIPE	RIPE
10.00	6.70	RIPE	RIPE
11.30	6.70		
10.20	6.70	RIPE	RIPE
14.84	6.72		
11.94	6.73		
11.38	6.76		
13.70	6.80	RIPE	RIPE
14.50	6.80	RIPE	RIPE
10.40	6.80	RIPE	RIPE
11.00	6.80	RIPE	RIPE
10.90	6.80	RIPE	RIPE
12.00	6.80	RIPE	RIPE
13.50	6.80		
17.40	6.80	RIPE	RIPE
13.50	6.80		
9.00	6.80	RIPE	RIPE
13.50	6.80		
13.00	6.87	RIPE	RIPE
10.30	6.90	RIPE	RIPE

Brix	Firmness	Taste	Appearance and colour
9.90	6.90	RIPE	RIPE
18.40	6.90	RIPE	RIPE
12.70	6.90	RIPE	RIPE
14.36	6.92	RIPE	RIPE
12.50	6.95		
12.90	7.00	RIPE	RIPE
14.90	7.00	RIPE	RIPE
14.00	7.00	RIPE	RIPE
13.20	7.00	RIPE	RIPE
14.20	7.00	RIPE	RIPE
10.00	7.00	RIPE	RIPE
11.00	7.00	RIPE	RIPE
11.50	7.00	RIPE	RIPE
13.00	7.00		
11.50	7.00	RIPE	RIPE
13.00	7.00		
12.00	7.00	RIPE	RIPE
13.08	7.07		
15.60	7.10	RIPE	RIPE
13.20	7.10	RIPE	RIPE
15.20	7.10	RIPE	RIPE
13.00	7.10	RIPE	RIPE
12.80	7.10	RIPE	RIPE
8.00	7.17	UNRIPE	UNRIPE
14.37	7.19		
13.70	7.20	RIPE	RIPE
14.00	7.20	RIPE	RIPE
13.48	7.22	RIPE	RIPE
13.72	7.26		
16.40	7.30	RIPE	RIPE
17.40	7.30	RIPE	RIPE
16.20	7.30	RIPE	RIPE
13.18	7.30		
14.30	7.37	RIPE	RIPE
13.90	7.40	RIPE	RIPE
12.50	7.50	RIPE	RIPE
10.00	7.50	RIPE	RIPE
12.00	7.50	RIPE	RIPE
15.65	7.59		
11.70	7.60	RIPE	RIPE
13.67	7.68		
15.20	7.70	RIPE	RIPE
17.70	8.00	RIPE	RIPE
13.37	8.17		
9.52	8.23		
15.00	8.50		
13.92	9.23		

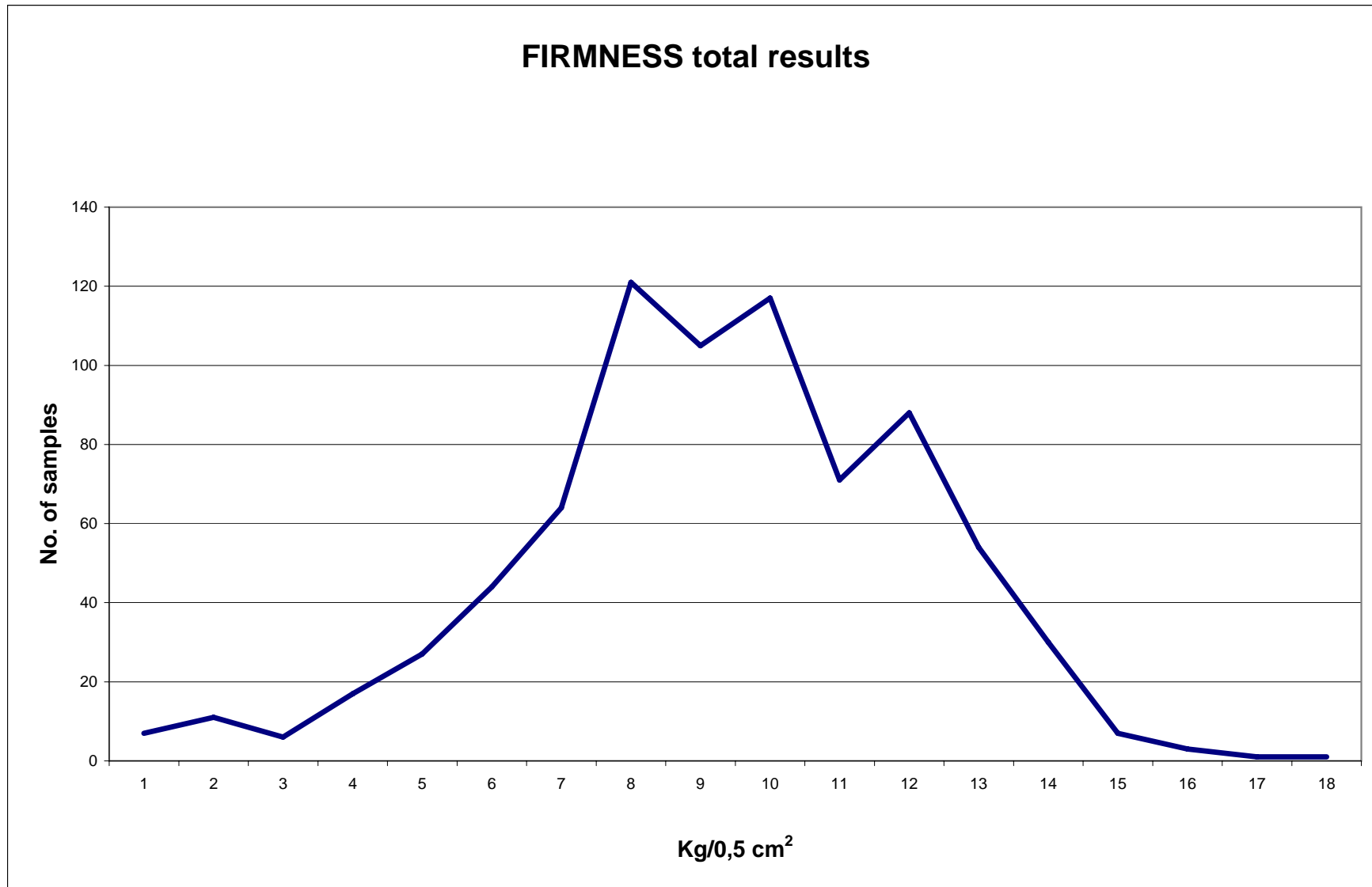




Firmness results and subjective testing

BRIX	No. of samples
< 8,0	12
>=8,0 v <8,5	17
>=8,5 v <9,0	42
>=9,0 v <9,5	66
>=9,5 v <10,0	79
>=10,0 v <10,5	100
>=10,5 v <11,0	76
>=11,0 v <11,5	94
>=11,5 v <12,0	74
>=12,0 v <12,5	71
>=12,5 v <13,0	66
>=13,0 v <13,5	50
>=13,5 v <14,0	42
>=14,0 v <14,5	24
>=14,5 v <15,0	21
>=15,0 v <15,5	14
>=15,5 v <16,0	11
>=16,0 v <16,5	8
>=16,5 v <17,0	2
>=17,0 v <17,5	4
>=17,5 v <18,0	2
>=18,0 v <18,5	2
>=18,5 v <19,0	1
>=19,0 v <19,5	1
<b>TOTAL</b>	<b>879</b>

Only UNRIPE records			BRIX	FIRMNESS	TASTE
BRIX	FIRMNESS	COLOUR AND MORPH.	BRIX	FIRMNESS	TASTE
6.40	4.89	Unripe	6.40	4.89	Unripe
6.80	3.90	Unripe	6.80	3.90	Unripe
7.10	3.82	Unripe	7.10	3.82	Unripe
7.20	4.12	Unripe	7.20	4.12	Unripe
7.80	4.25	Unripe	7.40	2.70	Unripe
7.90	4.47	Unripe	7.80	4.25	Unripe
8.00	7.17	Unripe	7.90	4.47	Unripe
8.00	4.38	Unripe	8.00	7.17	Unripe
8.00	5.28	Unripe	8.00	4.38	Unripe
8.00	4.19	Unripe	8.00	5.28	Unripe
8.00	6.00	Unripe	8.00	4.19	Unripe
8.20	3.90	Unripe	8.00	4.80	Unripe
8.20	4.90	Unripe	8.00	6.00	Unripe
8.40	4.66	Unripe	8.20	3.90	Unripe
8.50	4.24	Unripe	8.20	4.90	Unripe
8.50	6.40	Unripe	8.36	4.23	Unripe
8.54		Unripe	8.40	4.66	Unripe
8.80	5.70	Unripe	8.50	6.40	Unripe
8.80	6.20	Unripe	8.50	4.24	Unripe
8.96		Unripe	8.54		Unripe
9.00	4.38	Unripe	8.80	6.20	Unripe
9.20	4.78	Unripe	8.96		Unripe
9.33		Unripe	9.00	4.38	Unripe
9.40	5.70	Unripe	9.20	4.78	Unripe
9.40	6.50	Unripe	9.33		Unripe
9.60		Unripe	9.60		Unripe
9.60	6.50	Unripe	10.00	6.50	Unripe
10.00	5.33	Unripe	10.00	4.26	Unripe
10.00	4.25	Unripe	10.00	4.25	Unripe
10.00	4.26	Unripe	10.00	5.33	Unripe
10.00	6.50	Unripe	10.00	6.30	Unripe
10.10		Unripe	10.10		Unripe
10.30	6.00	Unripe	10.10		Unripe
10.50	4.67	Unripe	10.50	4.67	Unripe
10.86		Unripe	10.86		Unripe
10.99		Unripe	10.99		Unripe
11.00	3.96	Unripe	11.20	2.30	Unripe
11.22		Unripe	11.22		Unripe
11.56		Unripe	11.56		Unripe



Firmness results and subjective testing

Firmness	No. of samples	%
0,5 / 0,99	7	0.9%
1 / 1,49	11	1.4%
1,5 / 1,99	6	0.8%
2 / 2,49	17	2.2%
2,5 / 2,99	27	3.5%
3 / 3,49	44	5.7%
3,5 / 3,99	64	8.3%
4 / 4,49	121	15.6%
4,5 / 4,99	105	13.6%
5 / 5,49	117	15.1%
5,5 / 5,99	71	9.2%
6 / 6,49	88	11.4%
6,5 / 6,99	54	7.0%
7 / 7,49	30	3.9%
7,5 / 7,99	7	0.9%
8 / 8,49	3	0.4%
8,5 / 8,99	1	0.1%
9 / 9,49	1	0.1%
<b>TOTAL</b>	<b>774</b>	<b>100.0%</b>
% firmness out of grade		12.4%

Only UNRIPE records		COLOUR AND MORPHOLOGICAL
BRIX	FIRMNESS	
7.10	3.82	Unripe
6.80	3.90	Unripe
8.20	3.90	Unripe
11.00	3.96	Unripe
7.20	4.12	Unripe
8.00	4.19	Unripe
8.50	4.24	Unripe
7.80	4.25	Unripe
10.00	4.25	Unripe
10.00	4.26	Unripe
8.00	4.38	Unripe
9.00	4.38	Unripe
7.90	4.47	Unripe
8.40	4.66	Unripe
10.50	4.67	Unripe
9.20	4.78	Unripe
6.40	4.89	Unripe
8.20	4.90	Unripe
8.00	5.28	Unripe
10.00	5.33	Unripe
8.80	5.70	Unripe
9.40	5.70	Unripe
8.00	6.00	Unripe
10.30	6.00	Unripe
8.80	6.20	Unripe
8.50	6.40	Unripe
9.40	6.50	Unripe
9.60	6.50	Unripe
10.00	6.50	Unripe
8.00	7.17	Unripe
8.54		Unripe
8.96		Unripe
9.33		Unripe

Only UNRIPE records		
BRIX	FIRMNESS	TASTE
11.20	2.30	Unripe
7.40	2.70	Unripe
7.10	3.82	Unripe
6.80	3.90	Unripe
8.20	3.90	Unripe
7.20	4.12	Unripe
8.00	4.19	Unripe
8.36	4.23	Unripe
8.50	4.24	Unripe
7.80	4.25	Unripe
10.00	4.25	Unripe
10.00	4.26	Unripe
8.00	4.38	Unripe
9.00	4.38	Unripe
7.90	4.47	Unripe
8.40	4.66	Unripe
10.50	4.67	Unripe
9.20	4.78	Unripe
8.00	4.80	Unripe
6.40	4.89	Unripe
8.20	4.90	Unripe
8.00	5.28	Unripe
10.00	5.33	Unripe
8.00	6.00	Unripe
8.80	6.20	Unripe
10.10	6.30	Unripe
8.50	6.40	Unripe
10.00	6.50	Unripe
8.00	7.17	Unripe
8.54		Unripe
8.96		Unripe
9.33		Unripe
9.60		Unripe